



TAFE GIPPSLAND

Where
transformation
is made possible

2025 Course Directory

1300 133 717
tafegippsland.edu.au

TAFE
VICTORIA



Why study at TAFE Gippsland?



We can help you get to you where you want to be – whether it's a new vocational journey, a step up the job ladder or a pathway to your dream career.

Let's dive in!

Not only are we your local TAFE, but we're also Gippsland's largest training provider. So, what does that mean for you? It means, we've got you covered.

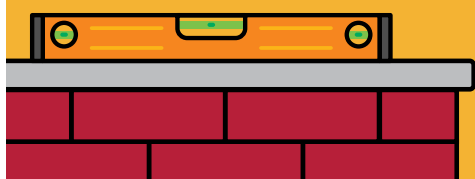
80+ courses
from certificate to diploma



9

**LOCATIONS
ACROSS
GIPPSLAND**

**Industry experienced
teachers passionate
about sharing their
knowledge**


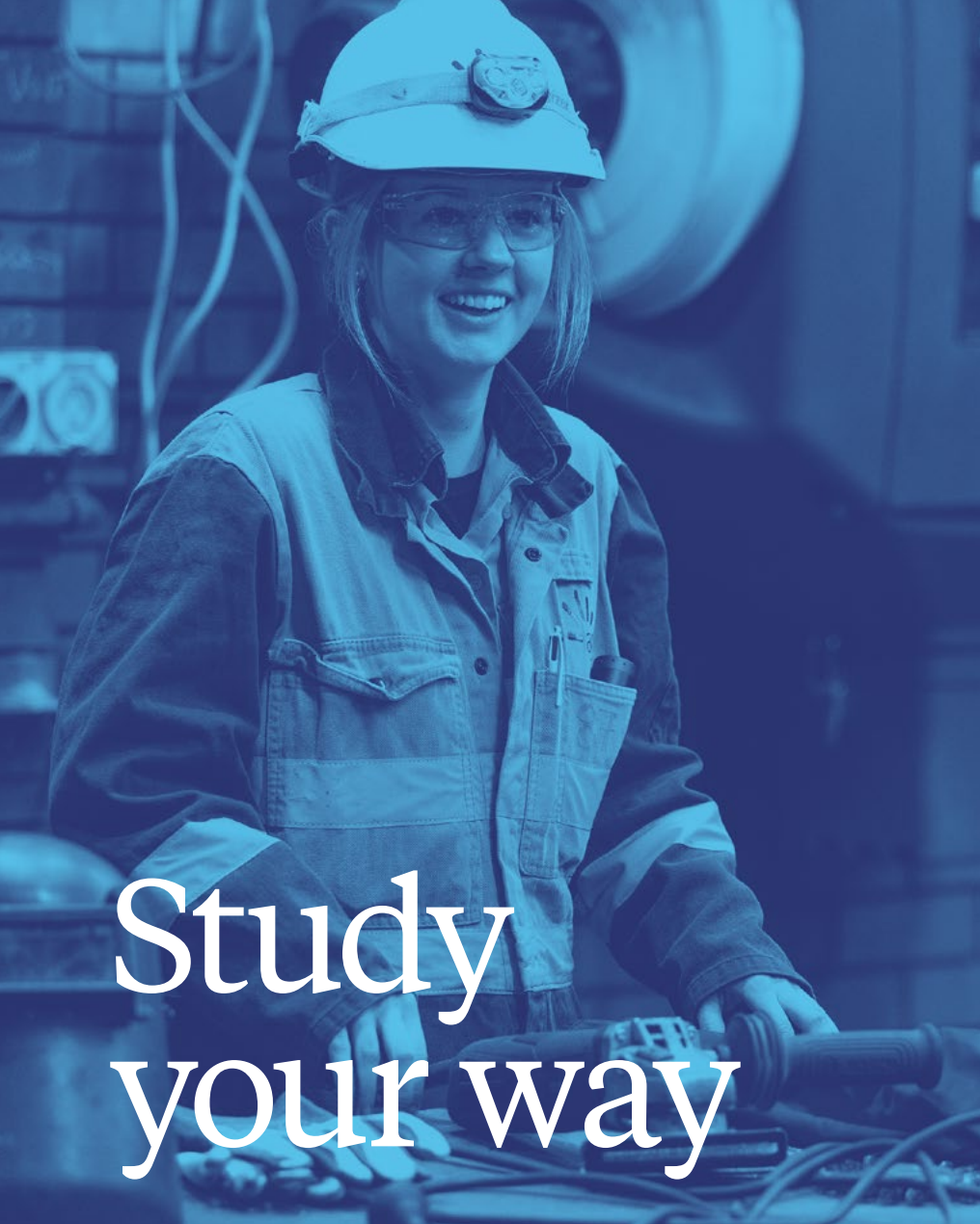


**VICTORIAN
TRAINING AWARDS**

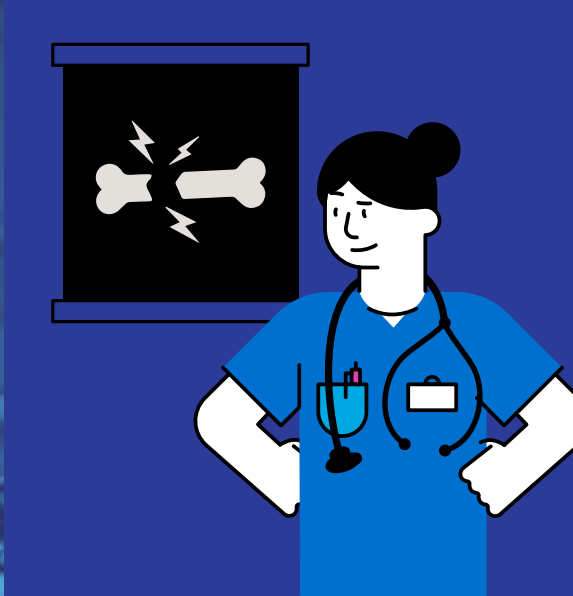
Victoria's Large Training
Provider of the Year

**Flexible learning options
delivered in supportive
environments**





Study your way



We realise that everyone learns differently. Our flexible modes of study are designed to help you get you where you want to be, faster.

Choose your own pathway

From short courses to certificates, traineeships, apprenticeships and diplomas, there are plenty of directions our learning pathways can take you at TAFE Gippsland.

Need help deciding which route is best for you? We aim to empower you to navigate your own pathway to any career destination – whether it be a traineeship, university, employment or a promotion.

Choose your own study mode and workload

With on-campus, online, work-based and blended delivery options available, you have the choice to attend a TAFE Gippsland campus 100% of the time, 50% of the time or not at all.

Full-time, part-time, short courses – the choice is yours how you approach your study journey and how you mould it to your lifestyle.

We also have learning options for secondary school students who would like to do their VCE but not in a traditional school setting. If you do your VCE with us, you can finish with an ATAR or without, it just depends on where you want to go.

2025 Course Directory

Ready to enrol?

**Already selected your course but still have some questions?
No idea where to start? No worries. Our recruitment
specialists are just a phone call away on 1300 133 717.**



KEY			
Free TAFE funded in 2025 for eligible students	FT	Port of Sale	POS
Bairnsdale	B	Traralgon	T
Bairnsdale Trade Centre	BTC	Warragul	W
Forestec	F	Warragul Baw Baw Skills Centre	WBS
Lakes Entrance (Seamec)	LE	Yallourn	Y
Leongatha	L	Online	O
Morwell	M	Delivered in workplace	WP
Sale (GTEC)	GT		
Sale (FLC)	FLC		

Animal Sciences

Animal Sciences

Campus

ACM20121	Certificate II in Animal Care	W
ACM30122	Certificate III in Animal Care Services	W

Veterinary Nursing

ACM40418	Certificate IV in Veterinary Nursing FT	Y
----------	--	---

Business

Business and Administration

Campus

FNS40222	Certificate IV in Accounting and Bookkeeping FT	O
FNS50222	Diploma of Accounting FT	O
BSB30120	Certificate III in Business	WP
BSB40120	Certificate IV in Business	O
BSB50420	Diploma of Leadership and Management	T

Creative

CUA40118	Certificate IV in Professional Writing and Editing	O
----------	--	---

Information and Technology

ICT30120	Certificate III in Information Technology FT	Y
TAE40122	Certificate IV in Training and Assessment FT	M

Work Health and Safety

BSB41419	Certificate IV in Work Health and Safety FT	O
----------	--	---



Early Childhood Education & Care

Early Childhood Education & Care		Campus
CHC30121	Certificate III in Early Childhood Education and Care FT	W, POS, M, B, WP
CHC50121	Diploma of Early Childhood Education and Care FT	WP

Education Support

CHC30221	Certificate III in School Based Education Support FT	B
CHC40221	Certificate IV in School Based Education Support FT	W, WP

English Language Courses

English Language Courses		Campus
22637VIC	Course in EAL	FLC, B, M, W
22638VIC	Certificate I in EAL (Access)	B, FLC, W, M
22639VIC	Certificate II in EAL (Access)	FLC, M, B, W
22640VIC	Certificate III in EAL (Access)	B, FLC, M, W

Foundation, VCE & VCE VM

Transition Studies		Campus
22566VIC	Certificate I in Work Education	T, W
22631VIC	Certificate II in Work Education	T
22567VIC	Certificate I in Transition Education	L, GT, T, W

VCE

22476VIC	Certificate I in General Education for Adults (Introductory)	FLC, M
22472VIC	Certificate I in General Education for Adults	FLC, W, M, B
22473VIC	Certificate II in General Education for Adults	W, B, M, O
22473VIC	Certificate II in General Education for Adults (ADF Preparation)	O
VCE0000001	Victorian Certificate of Education	O
VCE0000001	Victorian Certificate of Education (Vocational Major)	M, B



Food, Fibre and Conservation

Horticulture

		Campus
AHC20422	Certificate II in Horticulture FT	M
AHC30722	Certificate III in Horticulture FT	BTC, M
AHC30620	Certificate III In Production Horticulture FT	WP
AHC40422	Certificate IV in Horticulture	M

Conservation and Land Management

AHC31421	Certificate III in Conservation and Ecosystem Management	F
AHC51120	Diploma of Conservation and Ecosystem Management	

Agriculture

AHC30122	Certificate III in Agriculture FT	L, GT, W
AHC30221	Certificate III in Dairy Production FT	L, FLC, W
AHC40116	Certificate IV in Agriculture FT	L, FLC, W
AHC50116	Diploma of Agriculture	O

Hair & Beauty

Hairdressing

		Campus
SHB20216	Certificate II in Salon Assistant FT	POS, L, B, T
SHB30416	Certificate III in Hairdressing (Apprenticeship)	B, L, POS, T, WP
SHB30416	Certificate III in Hairdressing	T, L, B, POS

Beauty

SHB30121	Certificate III in Beauty Services	B, T
SHB40121	Certificate IV in Beauty Therapy	T, B
SHB50121	Diploma of Beauty Therapy	T

Health & Community Services

Ages Care

		Campus
CHC33021	Certificate III in Individual Support (Ageing, Home and Community) FT	M, W, L, B, WP
CHC43015	Certificate IV in Ageing Support FT	M

Nursing

HLT54121	Diploma of Nursing FT	W, L, B, M
----------	------------------------------	------------



Health & Community Services

Alcohol and Other Drugs

		Campus
CHC43215	Certificate IV in Alcohol and Other Drugs FT	T

Allied Health

HLT43021	Certificate IV in Allied Health Assistance FT	M
CHC43415	Certificate IV in Leisure and Health FT	W, WP

Community Services

CHC42021	Certificate IV in Community Services FT	W
CHC52021	Diploma of Community Services (Children, Youth & Families) FT	T

Disability

CHC33021	Certificate III in Individual Support (Disability) FT	B, M, T, W, O
CHC43121	Certificate IV in Disability FT	O

Mental Health

CHC43315	Certificate IV in Mental Health FT	T
CHC53315	Diploma of Mental Health	T

Hospitality

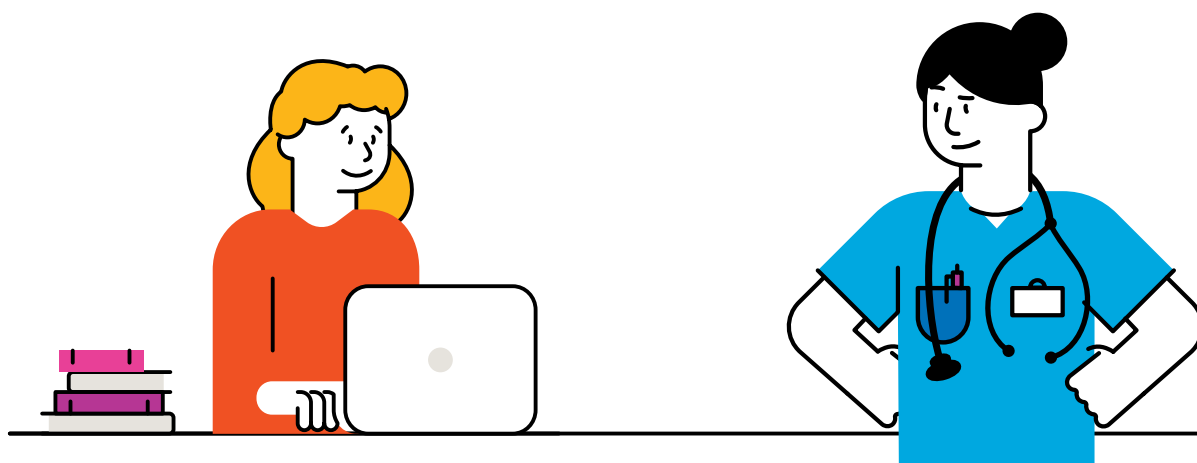
Hospitality

		Campus
SIT30821	Certificate III in Commercial Cookery FT	M, L, B
SIT30821	Certificate III in Commercial Cookery (Apprenticeship)	B, L, M, O
SIT30622	Certificate III in Hospitality (Traineeship)	WP

Koorie Studies

Koorie Studies

		Campus
22605VIC	Certificate II in Mumgu-dhal tyama-tiyt community, connection and pathways	B, M, W
22476VIC	Certificate I in General Education for Adults (Introductory) - Koorie Stream	M
22472VIC	Certificate I in General Education for Adults - Koorie Stream	M, W
22473VIC	Certificate II in General Education for Adults - Koorie Stream	W





Maritime

Maritime		Campus
MAR10418	Certificate I in Maritime Operations (Coxswain Grade 2)	LE
MAR20321	Certificate II in Maritime Operations (Coxswain Grade 1 Near Coastal)	LE
MAR20421	Certificate II in Maritime Operations (Marine Engine Driving - Grade 3 Near Coastal)	LE
MAR30921	Certificate III in Maritime Operations (Master up to 24 metres Near Coastal) Master Class 5	LE



Security Operations

Security Operations		Campus
CPP20218	Certificate II in Security Operations	Y
CPP31318	Certificate III in Security Operations	Y



Trades

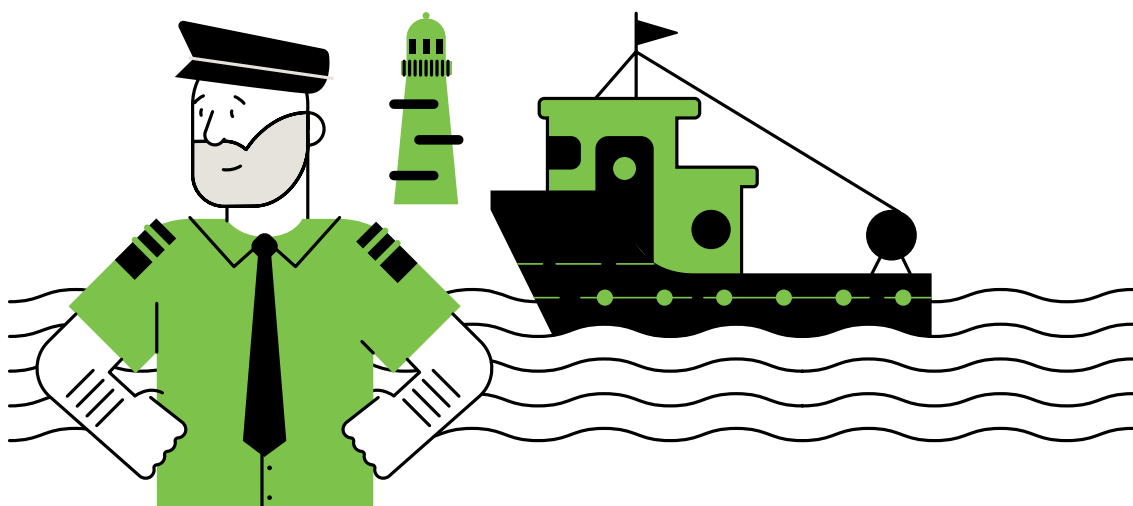
Automotive		Campus
AUR20220	Certificate II in Automotive Air Conditioning Technology FT	Y
AUR30620	Certificate III in Light Vehicle Mechanical Technology (Apprenticeship)	BTC, L, POS, W, Y
AUR30720	Certificate III in Outdoor Power Equipment Technology (Apprenticeship)	BTC, L, POS, W, Y
AUR31220	Certificate III in Mobile Plant Mechanical Technology (Apprenticeship)	POS, Y, BTC, L, W
AUR30420	Certificate III in Agricultural Mechanical Technology (Apprenticeship)	BTC, L, POS, W, Y
AUR30320	Certificate III in Automotive Electrical Technology (Apprenticeship)	BTC, L, POS, W, Y
AUR31120	Certificate III in Heavy Commercial Vehicle Mechanical Technology (Apprenticeship)	BTC, L, POS, W, Y

Bricklaying and Blocklaying

CPC33020	Certificate III in Bricklaying/Blocklaying (Apprenticeship)	Y
----------	---	---

Carpentry, Cabinet Making and Joinery

CPC30220	Certificate III in Carpentry (Apprenticeship)	BTC, POS, Y
MSF30322	Certificate III in Cabinet Making and Timber Technology (Apprenticeship)	BTC, Y
CPC31920	Certificate III in Joinery (Apprenticeship)	B, Y
CPC40120	Certificate IV In Building And Construction (Building) FT	O



Trades

Civil Construction

		Campus
RII30920	Certificate III in Civil Construction	WP
RII30820	Certificate III in Civil Construction Plant Operations FT	Y
CPC20220	Certificate II in Construction Pathways FT	Y, B

Electrical

UEE22020	Certificate II in Electrotechnology (Career Start) FT	M
UEE30820	Certificate III in Electrotechnology Electrician (Apprenticeship)	M
UEE31220	Certificate III in Instrumentation and Control	M
UEE31220	Certificate III in Instrumentation and Control (Apprenticeship)	M

Engineering

MEM31922	Certificate III in Engineering - Fabrication Trade - Sheetmetal (Apprenticeship)	POS, Y
MEM31922	Certificate III in Engineering - Fabrication Trade - Boilermaking (Apprenticeship)	POS, Y
MEM30219	Certificate III in Engineering - Mechanical Trade (Apprenticeship)	POS, Y
MEM40119	Certificate IV in Engineering (Pathway) FT	POS, Y

Painting and Decorating

22614VIC	Certificate II in Building and Construction (Painting and Decorating) (Pre-apprenticeship) FT	Y
CPC30620	Certificate III in Painting and Decorating (Apprenticeship)	Y

Plumbing

CPC32420	Certificate III in Plumbing (Apprenticeship)	BTC, M
CPC40920	Certificate IV in Plumbing and Services FT	M



**The average salary
of a VET graduate
is higher than a
university graduate**

Source: McCrindle Report: Perceptions are not Reality 2017



IGNITE
your spark!



StudentSupportServices

Support for every step

Our Student Support Services team is here to help you make the most of your study journey at TAFE Gippsland.

We offer a range of services to make sure you're reaching your maximum potential during your studies.

- Help managing your schedule
- Help with your assignments
- In-class support

If you think you'd benefit from any of these services, reach out to us. We are here to help you!

studentservices@tafegippsland.edu.au

Your go-to for all things study related.



tafegippsland.edu.au/studentservices



GO



2025 Short Courses

Ready to add to your skillset?

We're proud to offer a huge range of short courses across many industries that enable you to build skills fast. Whether you're looking to improve skills for work, life or play – we've got a course for you.

Our short courses are both flexible and affordable, allowing you to easily add to your skillset. What are you waiting for?

Open up a whole new world and enrol in one of our short courses today. Browse the list below and visit the Short Courses page on our website www.tafegippsland.edu.au/shortcourses for more information.



Short courses for individuals

Animal Sciences

		Campus
ACMSS00007	Microchip Implantation for Dogs and Cats Skill Set	O
O417PBFAA	Provide basic first aid for animals	Y

Agriculture and Horticulture

22516VIC	Course in Minimising Risks in the Use of 1080 & PAPP Bait Products	F, L, W, WBS
AHCSS00074	Agricultural Chemical Skill Set	B, L, GT, W
O417COLVP	Commercial Operator Licence Vertebrate Destroyer	F
O417AILVSK	Artificial insemination of livestock	Y

Hair and Beauty Therapy

O417EYELASH	Apply Eyelash Extensions	T
O417SPRAY	Apply Cosmetic Tanning Products	B, T

Biomanufacturing

22545VIC	Course in Biomanufacturing Pathways	Y
----------	-------------------------------------	---

Business	Campus	
0417EXCEL1	Introduction to Microsoft Excel	M
0417EXCEL2	Intermediate Microsoft Excel	M
0417EXCEL3	Advanced Microsoft Excel	M
0417WORD2	Intermediate Microsoft Word	M
Construction and Safety Skill Sets		
0417PIIC	Power Industry Induction Card	Y
0417WSH	Work Safely at Heights	Y
0417OHSOFF	NOPSEMA Offshore Oil & Gas - Health and Safety Representative	POS
0417HSROHS	Health and Safety Representative (HSR) Initial OHS Training Course	B, L, M, POS, W
0417HSREF	Health and Safety Representative (HSR) Refresher OHS Training Course	M, W
CONISS005A	Licence to perform rigging (Basic level)	Y
CONISS006	Licence to perform rigging (Intermediate level)	Y
CONISS008	Licence to erect, alter and dismantle scaffolding (Basic level)	Y
CONISS009	Licence to erect, alter and dismantle scaffolding (Intermediate level)	Y
CONISS010	Licence to erect, alter and dismantle scaffolding (Advanced level)	Y
CONISS012	Prepare to work safely in the construction industry	Y
CONISS014	Enter and work in confined spaces	Y
CONISS016	Licence to operate a boom-type elevated work platform (boom length 11 metres or more)	Y
CONISS003	Licence to perform dogging	Y
CONISS015	Licence to operate a forklift truck	Y
CONISS019	Licence to operate a slewing mobile crane (up to 60 tonnes)	Y
Work Health and Safety		
0417HSROHS	Health and Safety Representative (HSR) Initial OHS Training Course	B, L, M, POS, W
0417HSREF	Health and Safety Representative (HSR) Refresher OHS Training Course	M, W
Electrical		
0417PAT	Portable Appliance Testing	M, POS
UEESS00133	Disconnect / Reconnect	M
0417ECR	Electrical Contractors Registration	O
0417PDELEC	Professional Development for Electricians & Restricted Electrical Licensed workers	M, POS
UEESS00191	Grid-connected Battery Storage Systems Designer (Installer Skill Set)	M
Engineering		
0417WELD	Introduction to Welding	Y
0417TICKET	Welding Ticket Training	Y
Forest Management		
0417TCFT	Chainsaw - Trim and cross-cut felled trees (non-harvesting sector)	F
0417FOL	Forest Operators Licence (FOL)	F
04174WDT	Four Wheel Driving	F
0417FT	Tree Felling	F

Health	Campus	
0417CPR	Provide CPR	B, L, M
0417PFAID	Provide First Aid	B, L, M, Y
Hospitality		
0417FDHYG	Food Handler Course	B, L, M, POS
0417RSA	Responsible Service of Alcohol (RSA)	B, L, M, FLC, T, W
0417FDSUP	Food Safety Supervisor (Hospitality and Cooking Sector)	L, M
0417APFOOD	Food Safety Supervisor (Aged Care, Health Care and Community Sector)	B, M
0417COFFEE	Basic Espresso Coffee Making	B, L, M
Maritime		
0417BARPRO	Lakes Entrance Bar Crossing for Professional Operators	LE
0417BARREC	Lakes Entrance Bar Crossing for Recreational Operators	LE
0417RECPWC	Recreational Marine (boat) Licence and PWC Endorsement Training (MSV Endorsed)	LE, Y
0417SROCP	Short Range Radio Operator Certificate of Proficiency - Marine Radio	LE
0417LROCP	Long Range Radio Operator Certificate of Proficiency - Marine Radio	LE
0417ESS	Elements of Shipboard Safety	LE

Your one-stop-shop for training and career advice

Our Skills and Job Centres are focused on delivering specialist support to job seekers, career changers, upskillers, reskillers and school leavers, helping you find your vocational niche or become workforce ready.

Skills and Job Centre services are accessible from any one of TAFE Gippsland's 13 campuses in nine locations across the region. What does this mean for you? With access to local training, connections to local business and links to local industry, it means more study options and more job opportunities for you.

1300 282 317
tafegippsland.edu.au/skillsandjobscentre



**SKILLS AND
JOBS
CENTRE**

**THE
EDUCATION
STATE**

VICTORIA
State Government

62.7%

of grads* started a business
or received a promotion or
higher pay at work.

*Certificate IV in Business graduates.

Source: McCrindle Report: Perceptions are not Reality, 2017



\$88K

Typical salary for
an Early Childhood
teacher

Source: [seek.com.au/career-advice/
role/early-childhood-teacher](http://seek.com.au/career-advice/role/early-childhood-teacher)

Get your ducks in a row

Take your studies
further at TAFE.



9/10

courses predicted to have
the most job growth in the
next 5 years are offered at
TAFE Gippsland

Source: McCrindle Report:
Perceptions are not Reality, 2017



TAFE GIPPSLAND

1300 133 717
PO Box 3279 GMC,
Morwell 3841
enquiries@TAFEGippsland.edu.au
TAFEGippsland.edu.au

Leongatha | Warragul | Yallourn | Morwell | Traralgon
Sale | Bairnsdale | Forestec | Lakes Entrance Seamec



National Provider Number 0417 | 1295_0824

TAFE Gippsland has made every reasonable effort to ensure the information contained in this publication is current at the time of publishing. For updated information go to tafegippsland.edu.au or call 1300 133 717. Training is delivered with Victorian and Commonwealth Government funding. TAFE Gippsland reserves the right to alter this information and/or withdraw courses listed herein. © TAFE Gippsland 2024. National Provider Number 0417